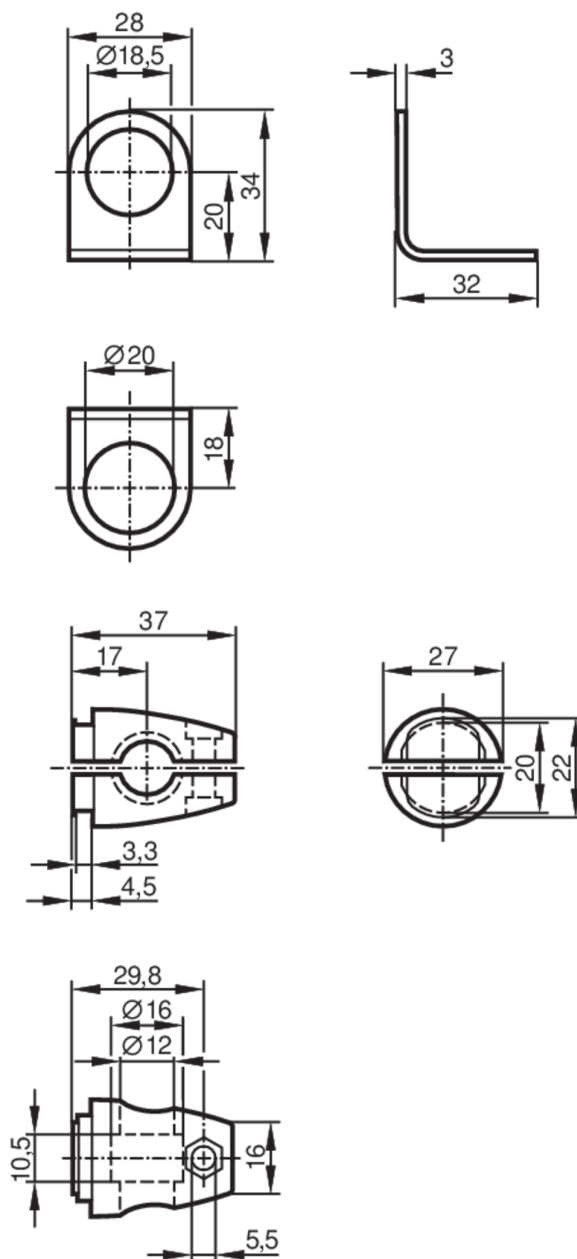


## Mounting set for position sensors

SYSTEM COMPONENT M18 ROD



## Application

Design

clamp mounting

## Mechanical data

Weight

[g]

117

Type of mounting

Mounting rod; ( $\varnothing 12$  mm)

Dimensions

[mm]

 $\varnothing 18,5$ 

Materials

fixture: stainless steel (1.4571/316Ti); Clamp: stainless steel (1.4408)

## Remarks

Pack quantity

1 pcs.